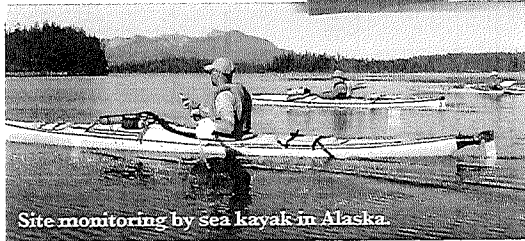
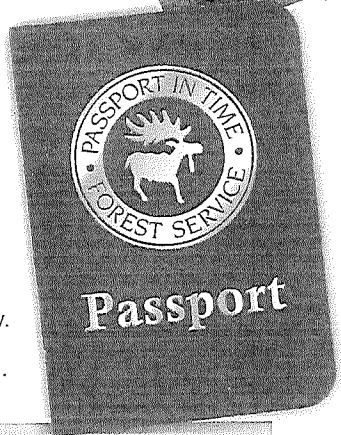


Take a trip!

PIT projects span the continental U.S. You can explore new territory or stay close to home. Depending on the project activity, you might camp under the stars in the wilderness, stay in your RV in a campground, or for some projects, choose to stay in local motels. All volunteers receive a passport to record the places they've worked and the hours they've contributed. Check [www.passportintime.com](http://www.passportintime.com) for the Volunteer Honor Roll.



Site monitoring by sea kayak in Alaska.



**Why a moose?**

The very first PIT project in 1988 took place in Minnesota, definitely moose country! Our logo was inspired by a local ancient petroglyph. Today, the moose signifies our strong connection with the past, and a dedication to all things worthy of protection.

1-800-281-9176

# PASSPORT IN TIME

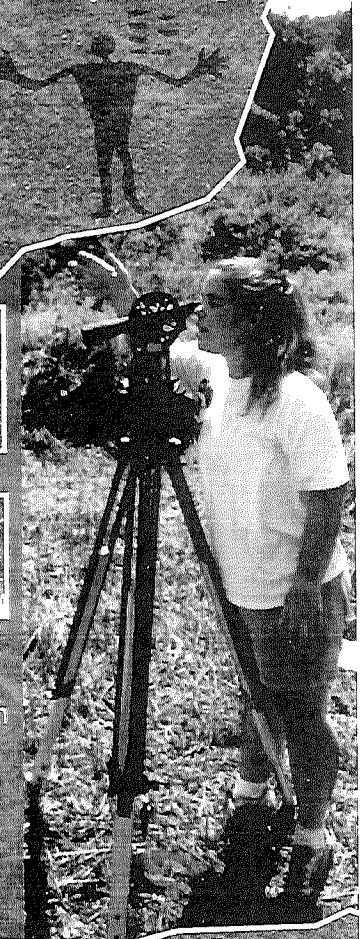


Preserving the nation's past with your help!

Passport In Time Clearinghouse  
P.O. Box 15728  
Rio Rancho, NM 87174-5728



A Volunteer Archaeology and Historic Preservation Program



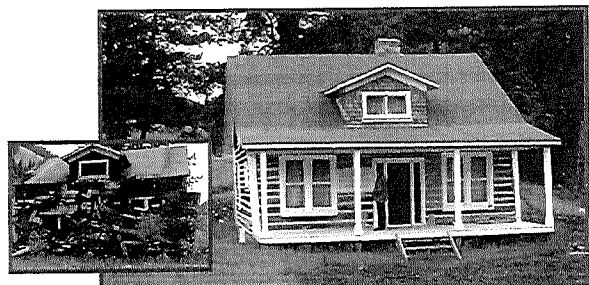
Place Stamp Here

[www.passportintime.com](http://www.passportintime.com)

*Help save the past  
for the future!*



Have fun, learn new skills, meet new people, and make a difference as a PIT volunteer! Work with professional archaeologists and preservationists to record rock art, conduct archaeological excavations, restore log structures, analyze artifacts, or catalog historic photographs. There are many ways to help.



## Testimonials

### **Chequamegon-Nicolet National Forest, Wisconsin:**

"I keep coming back to PIT projects to see old friends, meet new ones, and keep young mentally and physically....and for the sheer joy of the projects!"

### **George Washington & Jefferson National Forest, Virginia:**

"My children absorbed so much information and were willing to do anything that was asked of them because they were given equal responsibility and respect. As a parent, all I can say is, WOW!"



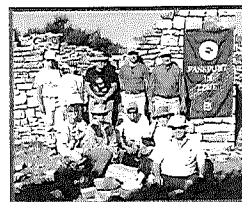
# Volunteer Opportunities that will change your life

—Outside Magazine

PIT projects vary in length from two days to two weeks, or longer. To find out what projects are available, go to [www.passportintime.com](http://www.passportintime.com) and click on Current Projects.

Or contact:

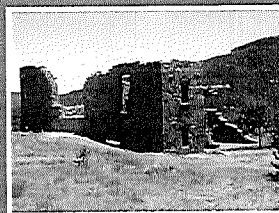
**Passport in Time  
Clearinghouse  
P.O. Box 15728  
Rio Rancho, NM 87174-5728  
Tel. 1-800-281-9176  
(toll free, voice & TTY)**



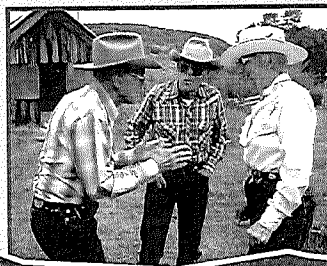
Email: [volunteer@passportintime.com](mailto:volunteer@passportintime.com)

## Preserve America!

PIT is a Preserve America Steward's Program. Please visit [www.preserveamerica.gov](http://www.preserveamerica.gov) to learn more.

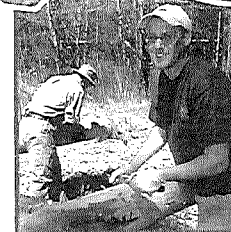


The U.S. Forest Service initiated Passport in Time and after two successful decades, has expanded it to engage other agencies and organizations. Keep an eye on [www.passportintime.com](http://www.passportintime.com) for more opportunities to help Preserve America on public lands!



"The anticipation of the thrill of discovery is powerful at these prehistoric sites. PIT is altogether an exhilarating experience."

## Frequently Asked Questions



### How do I apply?

Go to [www.passportintime.com](http://www.passportintime.com) for a list of current projects. Submit a brief application on line or by mail.

### Who can apply?

Anyone who wants to help can apply. Many projects accept children under the age of 18 with responsible adult supervision. Check the minimum age requirement for the projects that interest you.

### What if I don't get accepted?

We receive many more applications than we can accept. Please do not be discouraged if you are not accepted on your first try. We appreciate everyone who wants to help. Be persistent and you will get the chance!

### Can I apply to more than one project?

Apply to as many projects as you can work into your schedule, but don't forget to consider time for travel.

### What if I have a disability?

Many projects include activities for people with diverse abilities. If you have specific questions about accessibility or physical requirements for any project, call (800) 281-9176 (voice, TTY), or email [volunteer@passportintime.com](mailto:volunteer@passportintime.com).



### Are my expenses tax deductible?

Project-related expenses such as gas, mileage, food, and lodging may be deducted.

### **Santa Fe National Forest, New Mexico:**

"I just returned from a project... my hair is like shredded wheat, my nose sunburned, and I'm filthy all over from scrambling up mountain ridges at 8,000 feet, and I am exhilarated!"

### **Uinta National Forest, Utah:**

"PIT incorporates direct service, education, community building...all in all, active citizenry!"

The USDA is an equal opportunity provider and employer.



[www.passportintime.com](http://www.passportintime.com)

1-800-281-9176